

29 September 2016

Ref: N0147

Dear Resident

Temporary closure of the Hills M2 Motorway eastbound off-ramp to Pennant Hills Road

NorthConnex is a nine kilometre tunnel that will link the M1 Pacific Motorway at Wahroonga to the Hills M2 Motorway at West Pennant Hills, removing around 5,000 trucks off Pennant Hills Road each day.

As part of NorthConnex, changes will be made to the eastbound off-ramp at Pennant Hills Road so that a new northbound entry to the NorthConnex tunnel and a cycleway can be built.

What are we doing?

The Hills M2 eastbound off-ramp exit to Pennant Hills will be closed between **6pm and 8am on Friday 7 October, Saturday 8 October and Sunday 9 October 2016, weather permitting**. Vehicles will not be able to use the off ramp during these times.

Work will be carried out outside of standard construction hours to minimise the impact on traffic and to ensure the safety of workers and road users.

Work hours will be:

- 7pm Friday to 7am Saturday
- 6pm Saturday to 8am Sunday
- 6pm Sunday to 5am Monday.

In the event of poor weather work will be carried out on the following weekend.

There will be two alternative detour routes in place for motorists (see map overleaf). The primary detour will be approximately 10km via Windsor Road, Old Northern Road, Terminus Street, Old Northern Road, Castle Hill Road, and Pennant Hills Road.

A secondary detour will be approximately 10km via Lane Cove Road, Pacific Highway and Pennant Hills Road.

Roads and Maritime Services has approved all roads identified in the detours for B Doubles (heavy vehicles).

Traffic management will be in place to ensure the safety of motorists, residents and workers and electronic variable message signs along the detour will advise motorists of the changed traffic conditions.

Return 
local streets to local communities

Up to 
5,000 trucks per day
off Pennant Hills Road

Up to 
15 mins **travel time saving**


Deliver **improvements**
to local **air quality**

Up to 
21 **traffic lights bypassed**

improve 
the **efficient movement** of
state and **national freight**


Better and more
reliable trips
for people, businesses and freight



Australian Government

BUILDING OUR FUTURE

NSW
MAKING IT HAPPEN

transurban

Work activities

The following construction activities will be carried out during the closure:

- Installing pre-cast beams at the cycleway structure
- Installing the girders (i.e support beams) and the abutments (i.e support structure)
- Relocation Of the tolling gantry
- Resurfacing the pavement.

Plant and equipment to be used for this work includes an elevated work platform, 350 tonne crane, trucks, and hand tools.

You are likely to experience increased noise during some of these activities and we will make every effort to minimise impacts by:

- Notifying residents before work starts near their property
- Using non-intrusive reversing beepers on all machinery
- Turning off equipment and vehicles when not in use
- Where possible directing noise generating equipment and lighting away from residential properties.

We thank you for your patience, and if you have any questions or complaints, please don't hesitate to call us on **1800 997 057**, email enquiries@northconnex.com.au or visit the NorthConnex Community Information Centre at 118 Yarrara Road, Pennant Hills, open weekdays from 9am to 5pm.

Yours sincerely

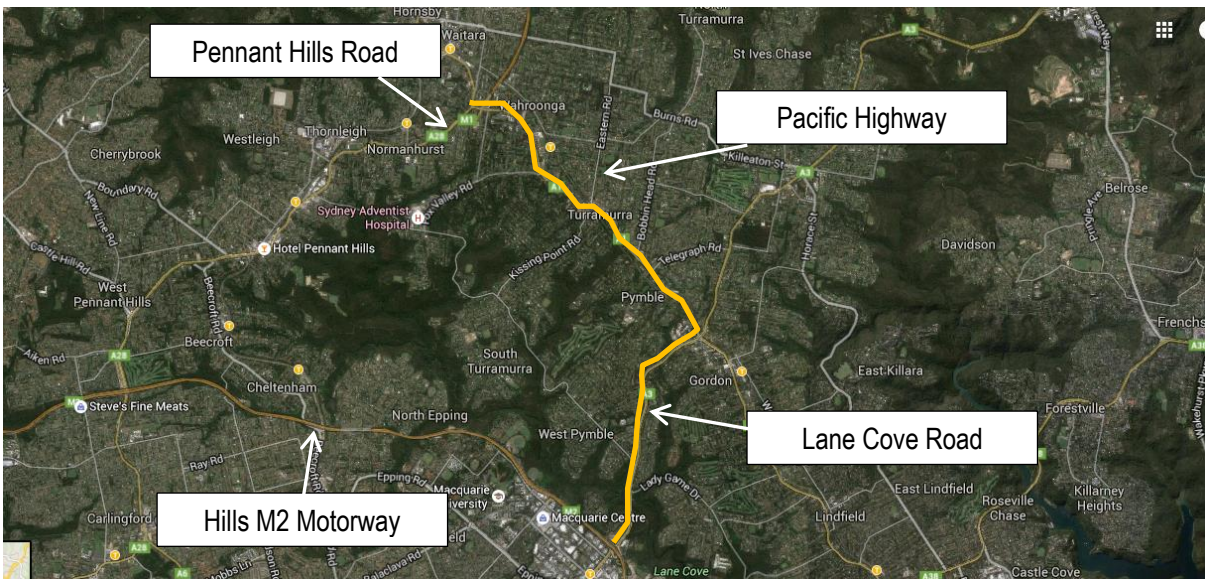
NorthConnex Project Team

Primary motorist detour route



Detour via Windsor Road, Old Northern Road, Terminus Street, Old Northern Road, Castle Hill Road and Pennant Hills Road.

Secondary motorist detour map



Detour via Lane Cove Road, Pacific Highway and Pennant Hills Road.