

14 October 2016
Ref: N0144

Stage two: Installation of new noise wall and a permanent pedestrian path between the M1 Pacific Motorway and Hewitt Avenue

Dear Resident

Further to our notification in August, work is continuing to build a new retaining wall, noise wall and permanent pedestrian path between the M1 Pacific Motorway and Hewitt Avenue, Wahroonga. This work is being completed in three stages and is expected to take six months to complete.

What are we doing?

Now that stage one of this work is completed, stage two, which includes installing a new noise wall and pedestrian path, will start from 18 October 2016 and take about 12 weeks to complete, weather permitting. A map of the work area is provided overleaf.

Generally, this work will be carried out during standard construction hours from 7am to 6pm Monday to Friday and 8am to 1pm on Saturdays.

To ensure the safety of motorists and workers, night work will be required to install the noise wall between the M1 Pacific Motorway and Hewitt Avenue. This work will be carried out between 9.30pm and 5am Sunday to Friday for up to three nights a week. There will be no work on Saturday nights and we will notify directly impacted residents again before the start of night work.

Plant and equipment for this work includes excavators, trucks, water cart, piling rig, concrete trucks, light tower, mobile cranes and light vehicles.

To carry out this work safely we will also need to close the existing pedestrian path at various times. Where possible the pedestrian path closures will be outside of peak hours. During the closures, pedestrians will need to allow additional travel time and access the M1 Pacific Motorway by walking along Havilah Avenue, Hinemoa Avenue and Pennant Hills Road.

Residents can register for SMS updates on night work and specific closure times by contacting us on 1800 997 057 or enquiries@northconnex.com.au

Managing impacts

You may experience some noise during some of these activities and we will make every effort to minimise impacts by:

- > Turning off machinery when not in use



Australian Government

BUILDING OUR FUTURE



Transurban

- > Using non-intrusive beepers on all machinery
- > Not working more than three nights a week and no more than three nights consecutively for high noise generating activities
- > Carrying out less noisy work on the other night of the week
- > Where possible direct noise generating equipment away from residential properties
- > Consulting with directly affected residents.

Traffic management

To carry out this work there will be intermittent lane closures on the M1 Pacific Motorway between 9.30pm and 5am Sunday to Friday. Traffic management and signage will be in place to ensure the safety of motorists, residents and workers. Access from the M1 Pacific Motorway to Pennant Hills Road will be maintained for motorists at all times.

During this time the temporary pedestrian path between the M1 Pacific Motorway and Hewitt Avenue will be rediverted. Pedestrians may need to allow additional travel time and access the M1 Pacific Motorway by walking along Havilah Avenue, Hinemoa Avenue and Pennant Hills Road.

Stage three

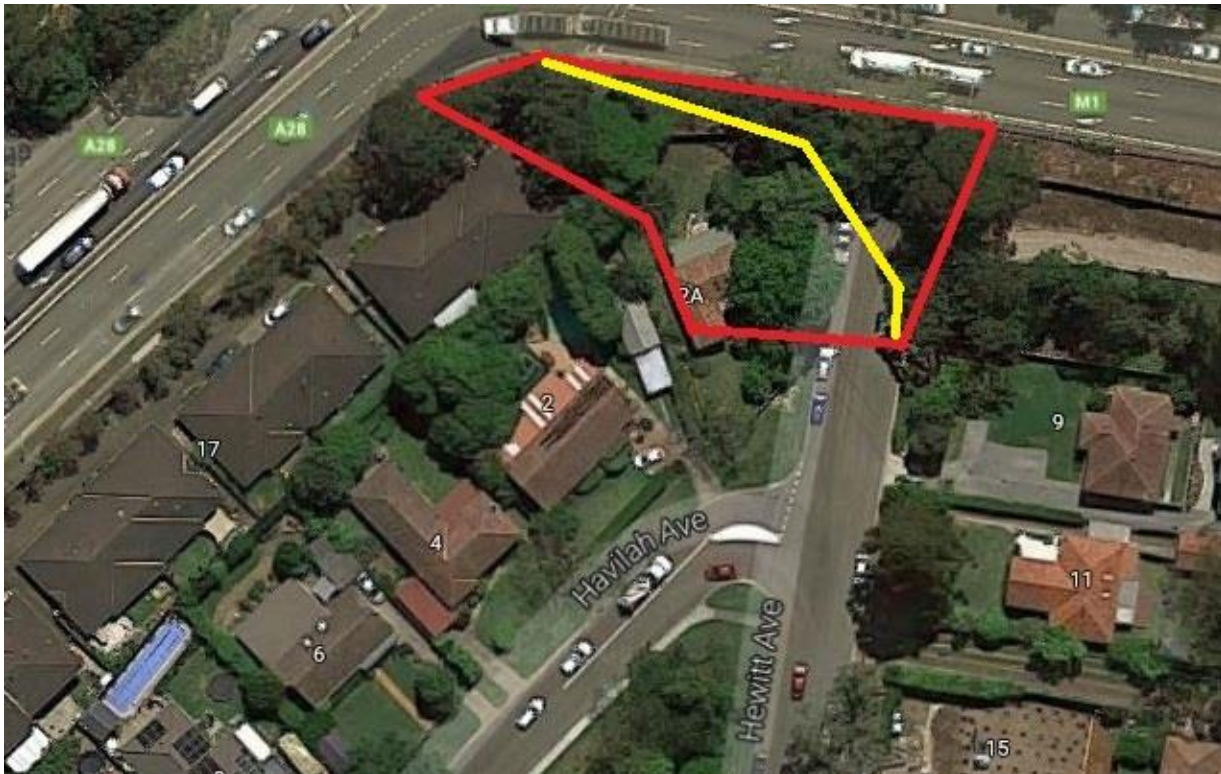
Stage three will include building the new pedestrian path, and is scheduled to start in early 2017. This work is expected to take about four weeks to complete, weather permitting, and will generally be carried out during standard construction hours, however we will need to carry out some of this work during the night. There will be no work over the Christmas/New Year period and we will notify you again in advance of this work starting.

We thank you for your patience, if you have any questions or complaints, please don't hesitate to call us on **1800 997 057**, email **enquiries@northconnex.com.au** or visit the NorthConnex Community Information Centre at 118 Yarrara Road, Pennant Hills, open weekdays from 9am to 5pm.

Yours sincerely

NorthConnex Project Team

Location of work



 Work area

 Pedestrian path