

22 September 2018

Ref: N0198

Day and night work: Pearces Corner, Pennant Hills Road and M1 Pacific Motorway, Wahroonga

Dear resident,

Work is continuing to widen Pennant Hills Road and the M1 Pacific Motorway as part of the NorthConnex project. This includes:

- building a new northbound lane for motorists travelling to Hornsby on Pennant Hills Road between M1 Pacific Motorway and Pacific Highway
- building the tunnel entry and exit ramps on the M1 Pacific Motorway between Pennant Hills Road and Pacific Highway
- upgrading the intersections at M1 Pacific Motorway/Pennant Hills Road and Pennant Hills Road/Pacific Highway.

A map of the work area is provided in this notification.

Generally, the work is carried out during standard construction hours between **7am and 6pm Monday to Friday** and **8am and 1pm on Saturday**, however for the safety of motorists and workers, some of this work is carried out at night between **8pm and 5am**. Tunnelling and associated above ground work activities are **24 hours a day** in accordance with project approvals. Workers and vehicles also access the construction compounds at Pearces Corner and the Northern Interchange **24 hours a day**.

The main work activities include installing barriers, hoarding, signage, street lights and traffic lights; trimming vegetation; excavating, relocating and installing services and drainage; constructing road pavement; piling; concreting; asphaltting; saw cutting; hammering; line marking and building the tunnel dive structures.

Plant and equipment includes heavy and light vehicles, lighting towers, scaffold, cranes, elevated work platforms, generators, excavators, piling rigs, tunnel boring machines, jackhammers, hammer drills, grinders, concrete saws, concrete trucks, street sweepers, water carts, vacuum trucks, asphaltting and pavement machinery, rollers, line marking and removal plant, power and hand tools.

You will experience noise during this work and we will make every effort to minimise impact by:

- > scheduling noisy work to take place no more than two nights in a row and limiting noisy work to no more than three nights in one week at the same location
- > consulting with directly affected residents
- > providing respite for residents most affected by noise
- > using non-tonal reversing beepers on all machinery



Australian Government

BUILDING OUR FUTURE



Transurban

- > turning off equipment and vehicles when not in use
- > using solar-powered lighting towers
- > directing noise generating equipment away from residential properties where possible.

Traffic and pedestrian management

There will be an extension to the existing pedestrian diversion for a week **from Tuesday 25 September** while traffic is moved to the new northbound lane on Pennant Hills Road and traffic lights are installed at the intersection of Pennant Hills Road and Pacific Highway. Please see a map of the pedestrian diversion below. Both the existing pedestrian diversion and the extended diversion will be removed when the new lane opens.

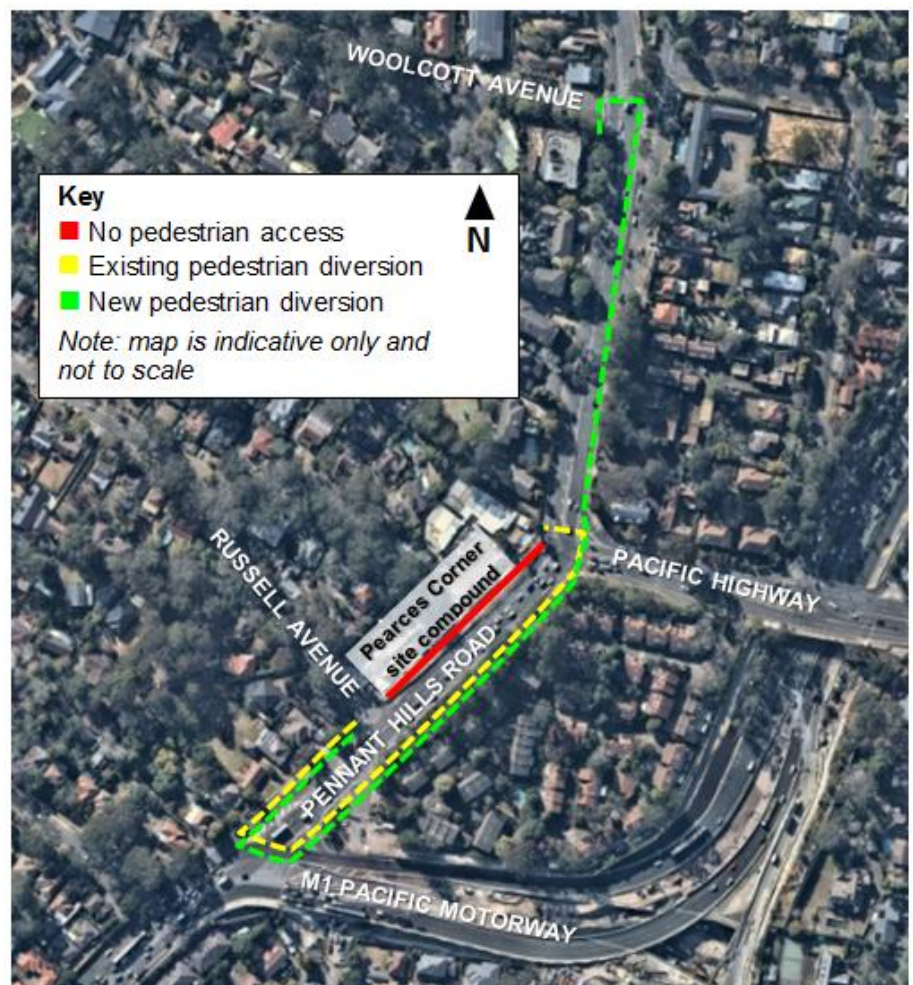
There are intermittent lane closures and detours at night on the M1 Pacific Motorway and Pennant Hills Road. Access will be maintained for motorists and residents at all times. Traffic management and signage is in place for the safety of motorists, residents and workers.

Please allow extra travel time and visit livetraffic.com, download Live Travel App or call the Transport Management Centre 132 701 for the latest information.

If you have any questions or complaints, or would like to receive SMS updates, please contact us on 1800 997 057 (24 hours), enquiries@northconnex.com.au or visit the NorthConnex Community Information Centre at 118 Yarrara Road, Pennant Hills, open Monday to Wednesday, 9am to 1pm.

Yours sincerely

NorthConnex Project Team



Pedestrian diversion map

Key

- Work area
- Tunnel entry and exit ramp
- New northbound lane alignment
- Intersection upgrades



Note: map is indicative only and not to scale

