

19 January 2018

Ref: N0186

## **Night work and temporary closure of the footpath on Pennant Hills Road between the Hills M2 Motorway and Murray Farm Road, Beecroft**

Dear resident

As part of ongoing work to realign Pennant Hills Road, work is continuing to build a new permanent breakdown bay on Pennant Hills Road between the Hills M2 Motorway and Murray Farm Road, Beecroft. A map of the work area is included.

This work will recommence on Wednesday 24 January and is expected to be complete by mid May 2018, weather permitting. To reduce impacts on road users and ensure the safety of workers and motorists this work will be carried out at night from 8pm to 5am between Sunday and Thursday. No work will be carried out on Friday and Saturday nights or public holidays.

### **Temporary closure of the southbound footpath and bus stop on Pennant Hills Road between the Hills M2 Motorway and Murray Farm Road**

To ensure the safety of pedestrians, workers and bus customers, the southbound pedestrian footpath between the Hills M2 and Murray Farm Road will be closed 24 hours a day, seven days a week from late January to mid May 2018, subject to weather and ground conditions. A southbound pedestrian detour will be in place via Maher Close and Murray Farm Road.

The bus stop on Pennant Hills Road near the Hills M2 will be closed during this time. The alternate bus stop for Route 625 is located 50 metres south of Murray Farm Road. Refer to map included. If you travel along this route, please allow extra travel time and follow the directional signage.

The work will include:

- > service investigation works
- > trenching
- > site establishment
- > service/asset installation and relocation including streetlights and street signage
- > earthworks and drainage
- > line marking and line marking removal
- > shotcreting, concrete and soil nailing
- > pavement construction

Plant and equipment for this work includes light towers, concrete trucks, concrete vibrators, road saws, pavers, spray seal trucks, hammer drill, hand tools, rattle guns, excavators with various attachments, jackhammers, bobcats, graders, cranes, core drills, sucker trucks, rollers, asphalt paving equipment, grinders, water carts, generators, trucks, drill riggers, street sweepers and line-marking/line-marking removal vehicles.



Australian Government

**BUILDING OUR FUTURE**



**Transurban**

You may experience some noise during some of these activities and we will make every effort to minimise impacts by:

- > using non-tonal reversing beepers on all machinery
- > turning off equipment and machinery when not in use
- > using noise blankets where possible
- > not working more than three nights a week and no more than two nights consecutively for high noise generating activities
- > carrying out less noisy work on other nights of the week.

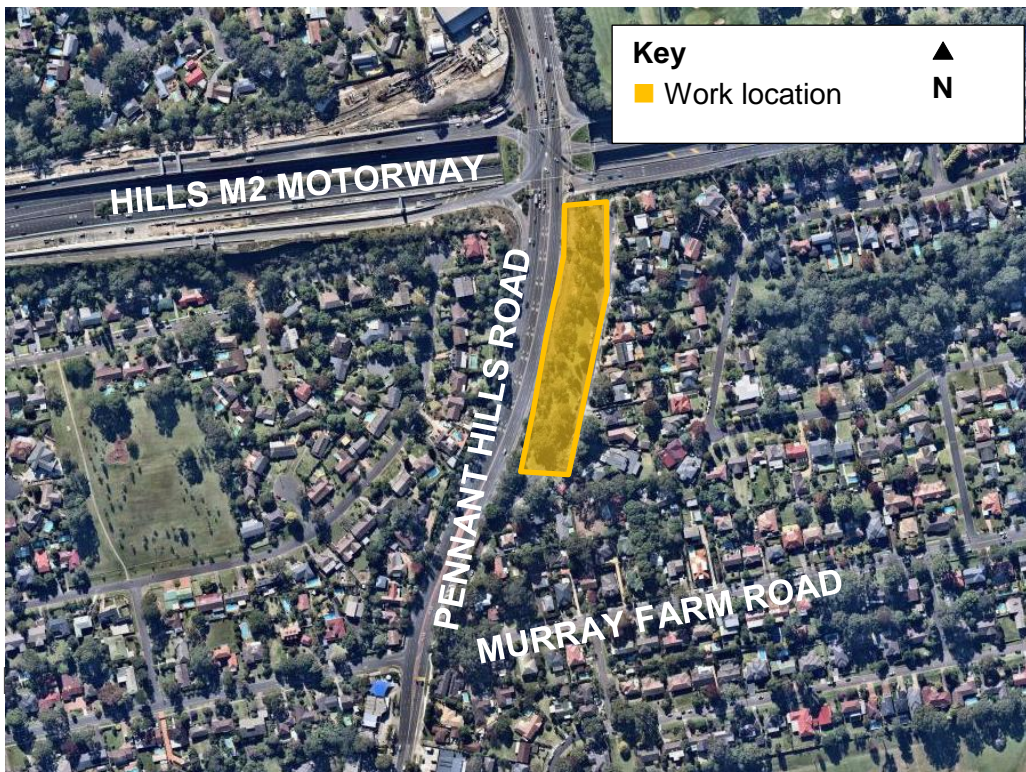
Traffic changes, traffic controllers and signage will be in place to ensure the safety of motorists, residents and workers.

Please allow extra travel time and visit [livetraffic.com](http://livetraffic.com), download Live Traffic App or call the Transport Management Centre 132 701 for the latest information. Access will be maintained for motorists at all times.

We thank you for your patience, and if you have any questions or complaints, please don't hesitate to call us on **1800 997 057**, email [enquiries@northconnex.com.au](mailto:enquiries@northconnex.com.au) or visit the NorthConnex Community Information Centre at 118 Yarrara Road, Pennant Hills, open Monday to Wednesday from 9am to 1pm.

Yours sincerely

**NorthConnex Project Team**



## Pedestrian detour and bus stop closure – late January to mid May 2018

