

1. Introduction

The layout of the Southern Interchange Compound requires amendment to facilitate the transition of the site from a construction compound into the Motorway Control Centre (MCC) and requires layout amendments from that detailed within the initial and currently approved Ancillary Facility Management Plan (AFMP). There are a range of proposed amendments which are discussed below.

2. Amendment & Assessment

A revised site plan detailing the proposed changes is provided in Attachment A.

Key aspects of the proposed amendments include:

- Construction of a temporary sediment basin and the decommissioning of the old sediment basin to facilitate construction of the storm water detention tank.
- Relocation of Electrical Transformer and associated equipment.
- Relocation of Tunnel Office and amenities building to a location above the dive structure.
- Relocation of Civils Office and amenities building to above the storm water detention tank once it has been built.
- Relocation of the tunnel workshop to above the M1CO dive structure and establishment of suitable oil / water separation infrastructure / bunding.
- Removal of sediment basin associated with current workshop location.

An assessment against the CoA D51 is provided below:

- (a) **a description of the ancillary facility (including a site layout plan), its components and details of the existing environment on and in the vicinity of the site;**

The description of the ancillary facility, its components and details of the surrounding environment are largely unchanged and are presented in the Ancillary Facilities Management Plan (AFMP) in Section 1.4 and in Table 3-1.

- (b) **details of the activities to be carried out at the facility, including the hours of operation, staging of operation and predicted date of commissioning;**

All activities at the facility remain unchanged from that described in the approved AFMP.

- (c) **a description of the plant, equipment and materials to be used and/or stored on the site, including dangerous and hazardous goods;**

All plant equipment and materials at the facility remain unchanged.

- (d) **a summary of the potential environmental impacts associated with the construction and operation of the facility;**

The minor amendments detailed above present a neutral to slight positive improvement in terms of impacts to adjacent receivers:

The construction of the temporary sediment and associated amendments to the site drainage to continue to ensure that site water is directed to the new basin which will assist in ensuring that site water is captured and treated in a compliant manner.

The Civils and Tunnels offices and amenities buildings move away from the site boundaries and closer to Pennant Hills Road so noise and visual impacts will be reduced. Whilst the facilities may be on slightly higher ground, the positioning of the buildings closer to the road will see the existing hoarding having a greater effect on blocking the views from the neighboring residents.

The relocation of the electrical transformer and associated equipment away from the site boundary and behind the 3m noise hoardings will ensure that there are no increased impacts.

The relocation of the workshop to a location above the M1CO dive will increase the offset distance between the workshop and the local residents thus reducing noise impacts from that of the current situation.

- (e) **details of the mitigation, monitoring and management procedures specific to the facility that would be implemented to minimise environmental and amenity impacts or, where this is not possible, feasible and reasonable measures to offset these impacts;**

Mitigation, monitoring and management actions in relation to the proposed amendment will involve the implementation of the current CNVMP, CWSMP and CAQMP. These sub plans all contain mitigation measures that are suitable to minimise the predicted impacts.

- (f) **a description of how the management and mitigation measures set out in the documents listed in condition A2 will be implemented on the site, and if not, justification for any departures from those management and mitigation measures;**

Management measures will be implemented as per the existing approved AFMP and Construction Environmental Management Plan (CEMP) with associated sub plans. The proposed amendment does not change the overall activities being undertaken at the Southern Interchange Compound which will be undertaken in accordance with the AFMP.

There will not be any departure from these management and mitigation measures as a result of the amendment.

In relation to the Condition of Approval (CoA) D35, D39 and D42 the amendments make no change to the current approved situation.

- (g) **identification of the timing for the completion of site establishment activities at the facility and how the site will be decommissioned (including any necessary rehabilitation); and**

The amendment involves the commencement of the evolution of the site from a construction compound to an operational Motorway Control Centre.

- (h) **mechanisms for the monitoring, review and amendment of this plan.**

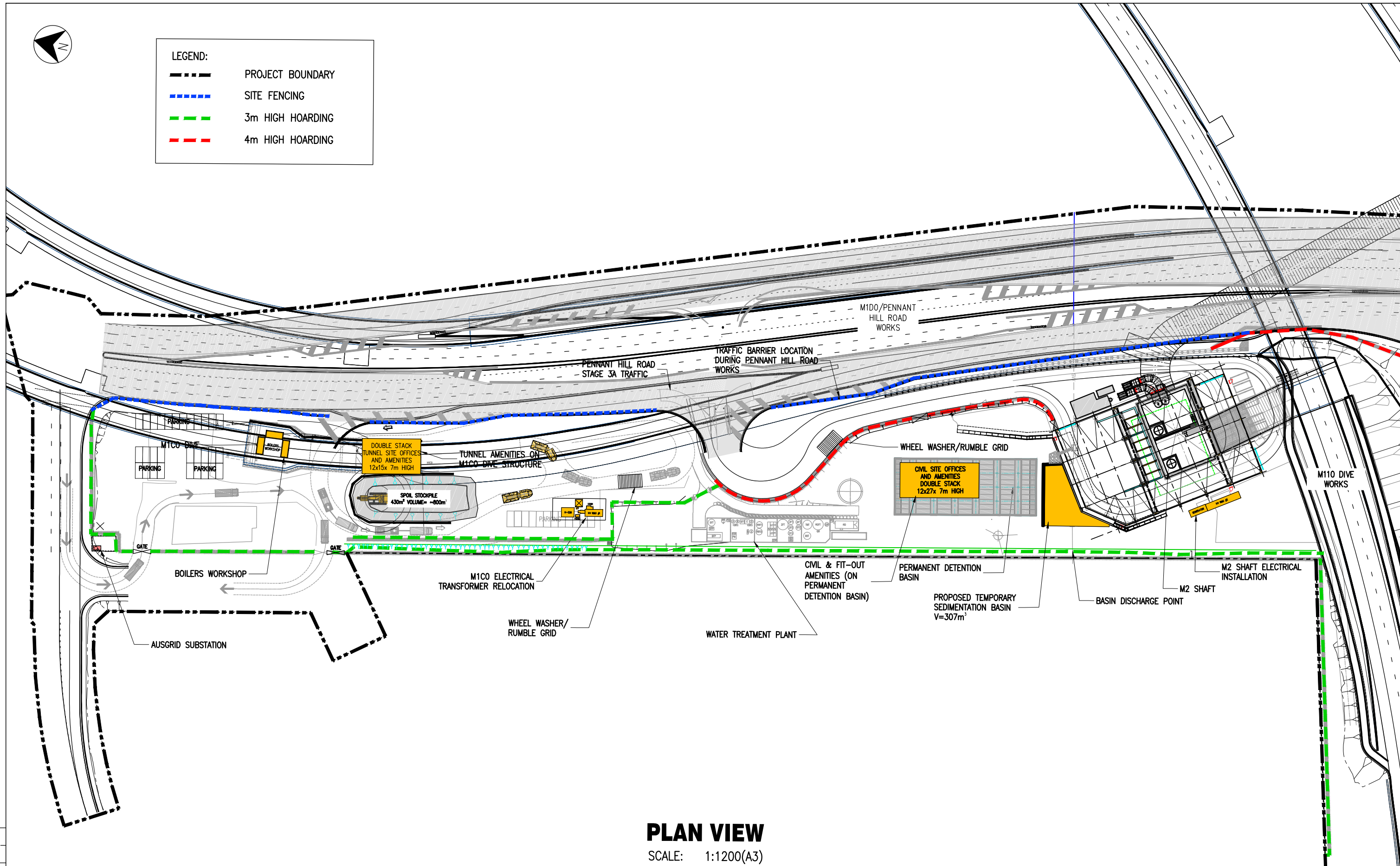
The proposed amendment does not change the details from that detailed in the currently approved AFMP. Please refer to the currently approved Table 3-1 within the AFMP that responds to these points.

Attachment A – Revised Southern Interchange Compound Layout



LEGEND:

	PROJECT BOUNDARY
	SITE FENCING
	3m HIGH HOARDING
	4m HIGH HOARDING



PLAN VIEW
SCALE: 1:1200(A3)

THIS DRAWING MAY BE PREPARED IN COLOUR AND MAY BE INCOMPLETE IF COPIED

DRAWING FILE LOCATION / NAME S:\400B Engineering\451B Methods\04_NCX_Southern Interchange\1_Working\NCX-LLB-02-0100-MD-DG-0242-01F-PRE_SOUTHERN INTERCHANGE - Civil & Building works - Site Installation.dwg		DESIGN MODEL FILE(S) USED FOR DOCUMENTATION OF THIS DRAWING -		PLOT DATE / TIME: 21/03/2017 10:29:58 AM		PLOT BY: GONZALEZ, Mathieu		CLIENT NorthConnex Building for the future		Project Originator Zone Section Discipline Type Drg No NCX - LLB - 02 - 0100 - MD - DG - 0242 A3			
EXTERNAL REFERENCE FILES xxxxxx		REV DATE AMENDMENT / REVISION DESCRIPTION WVR No. APPROVAL		SCALES ON A3 SIZE DRAWING		DRAWINGS / DESIGN PREPARED BY		TITLE NAME DATE		LOCALITY-COUNCIL AREA NAME ROAD_NUMBER ROAD_NAME SOUTHERN INTERCHANGE CIVIL & BUILDING WORKS SITE INSTALLATION			
		01A 11 JAN 17 FIRST ISSUE - - - - - 01B 16 JAN 17 REVISED AS PER ENVIRONMENT COMMENTS - - - - - 01C 08 FEB 17 RELOCATED M1CO ELECTRICAL TRANSFORMER - - - - - 01D 17 FEB 17 UPDATED WITH OBSERVATION TOWER - - - - - 01E 27 FEB 17 WORKSHOP OVER M1CO COVER ADDED - - - - - 01F 21 MAR 17 UPDATED AS PER ENVIRONMENT COMMENTS - - - - -		CO-ORDINATE SYSTEM HEIGHT DATUM MGA ZONE 56 AHD		lendlease SOUTHCOAST AUSTRALIA		DRAWN MGo 11/01/17 DRG CHECK MGo - DESIGN MGo - DESIGN CHECK JVNa - DESIGN MNGR - PROJECT MNGR -		Safety-in-Design risks are addressed at a conceptual level in this document. For more details, refer to specific safety documentation or dedicated drawings.		RMS REGISTRATION No. - PART - ISSUE STATUS DESIGN STAGE-DESIGN PHASE EDMS No. EDMS NUMBER SHEET No. (2) OF 4 ISSUE 01F	